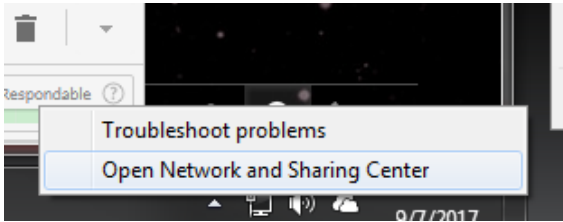
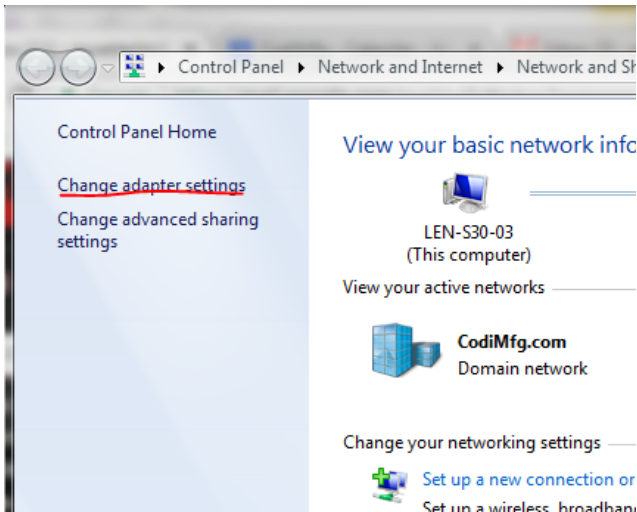


How to set a static IP for a computer's Ethernet port

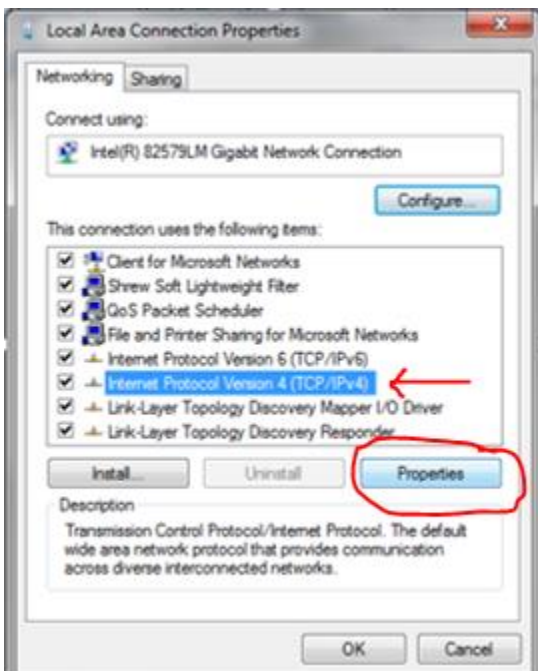
Step 1: Open network and sharing center



Step 2: Change adapter settings:



Step 3: Right click on the properties for the Ethernet port. Could be labeled "Local Area Connection" or something else.



Step 4: Change your settings as needed. For most of Codi machine networks the subnet is 2 and device addresses that are already in use are .10, .20, .30, .40 etc... so using an IP of .99 is usually safe.

Internet Protocol Version 4 (TCP/IPv4) Properties

General

You can get IP settings assigned automatically if your network supports this capability. Otherwise, you need to ask your network administrator for the appropriate IP settings.

☐ Obtain an IP address automatically

☒ Use the following IP address:

IP address: 192 . 168 . 2 . 99

Subnet mask: 255 . 255 . 255 . 0

Default gateway: . . .

☐ Obtain DNS server address automatically

☒ Use the following DNS server addresses:

Preferred DNS server: . . .

Alternate DNS server: . . .

☐ Validate settings upon exit

Advanced...

OK Cancel